



Chromcraft's TASSK™ training tables represent outstanding value, durability and design in office furniture. TASSK Tables are available in over four hundred Wilsonart® laminates, 10 metal finishes and 3 table edge styles. Tops are constructed of 1 3/16" thick

high density particle core, laminated on both sides. The top surface is .050 laminate with .030 phenolic backing laminated to the underside of the table. The edge band is a 1 1/4" thick, high impact T-mold available in three distinct styles: standard, fluted and bull



nose. The modesty panels consist of 3/4" high density particle core with .050 high pressure laminate on both sides. All Tassk training tables carry Chromcraft's 12 year warranty. The folding tables have a unique folding device that allows the legs and the modesty

- Fixed Legs or Folding Legs
- Folding Tables (no assembly required in most cases)
- Available with or without modesty panels
- Can be ordered with or without leg insert panels
- KT wire management (optional)
- Ganging (standard)
- Arch legs shown



panel to fold against the top for compact storage and shipment. Special note: (the modesty panels do not have to be removed for shipment or storage except on 18" and 24" Arch leg tables.) Once folded the legs and the modesty lock securely into place for

ease of handling and storage. Each Tassk table is equipped with metal brackets and adjustable knobs which serve as connectors and also as leveling devices for the table tops. There are three distinct base styles: Cantilever bases (also referred to as

C legs) T-legs and Arch leg bases. Bases consist of 1 1/2" diameter 16 gauge steel tubing uprights and top stretcher with bottom stretcher being 7/8" X 2 1/4" flat oval 16 gauge steel tubing. Fixed leg versions are shipped KD with hardware and complete

assembly instructions included. The folding version training tables, ship completely assembled and requires only the removal of the carton and packing material to place into use in most cases.

### TABLE TOP LAMINATES

Tassk tables are now available in over four hundred popular Wilsonart® laminates all at one great price, to see selections visit [www.wilsonartcontract.com](http://www.wilsonartcontract.com). Wilsonart® exceptions include their HD and Premium version laminates. For other laminate manufactures please contact your local sales representative or Chromcraft customer service for price and availability.

### METAL PAINT FINISHES



Black 77



Charcoal Metallic 48



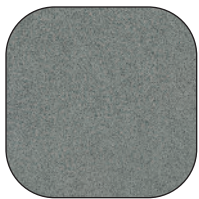
Brown Metallic 07



Chocolate 47



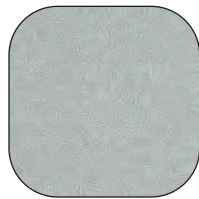
Dark Grey 28



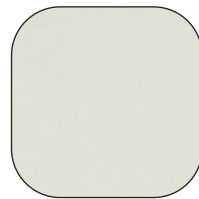
Pewter 98



Nickel 21



Silver Metallic 49



Soft White 39



Stone Grey 38

### TABLE EDGES



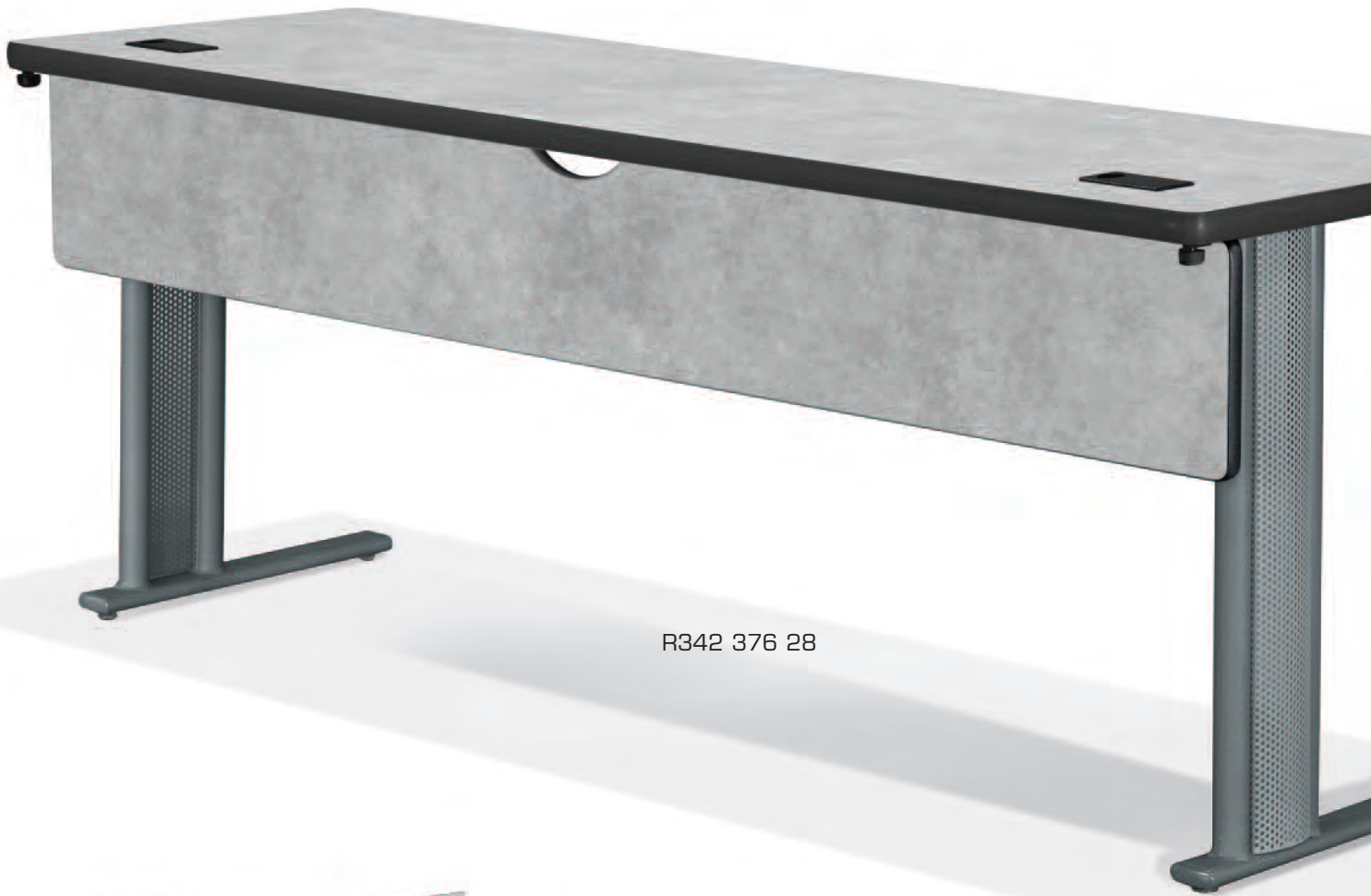
Bullnose B



Fluted F



Standard S



R342 376 28



As Shown

R342 376 28 Two Units  
MW94 475 28 One Unit

- Cantilever fixed legs shown (assembly required)
- KT wire management (optional)
- Ganging (standard)
- Available with or without modesty panel (quarter circle table not available with modesty panel)
- Available with or without leg insert

R342 276 28



R24Q 376 28



As Shown

R342 376 28 Two Units  
R24Q 376 28 Two units



### FOLDING LEGS

- T-Legs shown (no assembly required on folding legs)
- Available with or without:
  - leg insert panels
  - KT wire management
- KT wire management (optional)
- Ganging (standard)



**FIXED LEGS**

- T-Legs shown (assembly required on fixed legs)
- Available with or without:  
leg insert panels  
KT wire management
- Ganging (standard)



R224 316 77



R258 216 98



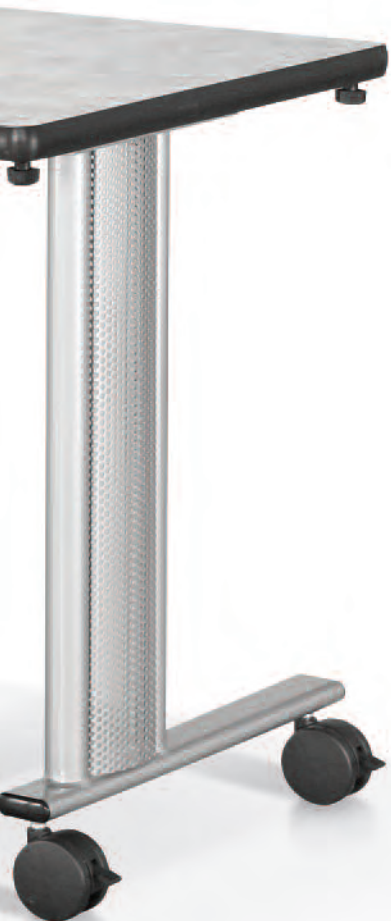
R242 216 77

- Available on Cantilever Version
- Folding tables (no assembly required)
- Fixed leg table (assembly required)
- KT wire management (optional)
- Ganging (standard)
- Available:
  - with or without modesty panels
  - with or without leg inserts
  - folding or fixed legs
- Casters:
  - 3 inch diameter dual wheel
  - 360 degree swivel
  - locking feature (standard)





Half Round Tables provide unlimited configurations when used with other tables in the CHROMCRAFT Task Table Series.



- Arch folding (no assembly required except 18" and 24" tops with modesty panels)
- Available with fixed or folding legs
- KT wire management (optional)
- Ganging (standard)
- Available with or without modesty panel
- Available with or without leg insert



R302 328 77





R342 318 77



R242 218 77



R202 228 77



MW94 475 28  
Wedge Top  
Includes single post leg.  
(not free standing)



R24Q 376 28 Two Quarter Circle Units



R224 216 77

Quarter Circle, Half Round and Trapezoid Tables provide unlimited configurations when used with other tables in the CHROMCRAFT Tassk Table Series.



R258 27C 21

- Half Round and Trapezoid Tables available in Cantilever, Caster and T-leg versions.

- Half Round and Trapezoid Tables available with Fixed Legs or Flip Top versions.



Flip Top Tables



R224 101 77



R258 101 77

Tassk offers a variety of top sizes and connector tops for those occasions which require ADA

height tables. 24" & 30" depth versions are available with or without modesty panels. Trapezoid

and half round tops are available in two sizes. Available with fixed cantilever legs with and with-

out leg inserts. KT wire management kit is available on most tops.



R224 27T 77



MW90 47T 77  
Wedge Top  
Includes single post leg.  
(not free standing)



R258 27T 77

- Cantilever fixed legs only (assembly required)
- KT wire management (optional)
- Ganging (standard)
- Available with or without modesty panel
- Available with or without leg insert



R342 37T 77



R342 27T 77



R242 27T 77

All Chromcraft training tables come standard without wire grommets. Grommets can be factory installed by adding KT to the model number where applicable with an up-charge (see current pricer). Tassk power options include: A006 which mounts to the outer table edge for simple power and data access at desktop level without the need of the optional

KT kit. The A007 retractable power and data center which fits into our optional KT grommet package. The A007 closes flush with the top surface or can remain open for desk top power access. The A006 and A007 offer two simplex receptacles, two data ports and a six-foot 15 amp power cord which plugs into standard 110 outlet.

**Daisy Link Wiring** allows the end-user a simple single plug to power up to eight tables utilizing a single grommet or four tables using both grommets from our optional KT grommet kit. The Daisy Link system begins with an ALK1 which plugs into any standard 110 power sources and features a retractable power and data center, a ten-foot 15 amp circuit

protected power cord and link connector for the ALK2 link. Each link (ALK2 - ALK8) includes a retractable power and data center, a 60" power cord and connector for the next available link. Daisy Links ALK2 through ALK8 must be connected in sequence with a maximum of eight links which are color coded in sequence for ease of connection.



A007  
Retractable Power  
and Data Center





A201 21



ALO5



A202 77



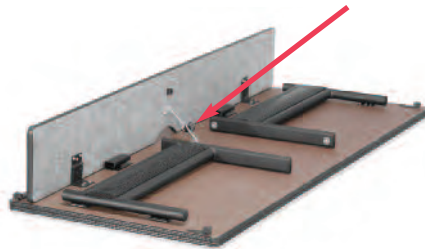
A201 77 Cart

**TO SET UP:**

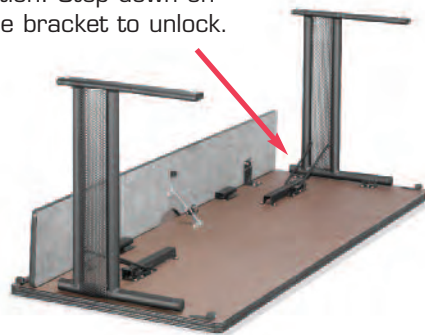
1. With table inverted, locate modesty panel.
2. Pull up on modesty panel until it locks in place.
3. Lock legs into position by pulling legs upward.
4. Invert table in upright position. Using adjustable floor glides, level table as necessary.
5. To gang tables together, hook tables together with ganging clips.



Hinge shown in lock position. Pull to unlock.



Hinge shown in lock position. Step down on hinge bracket to unlock.



**TO STORE:**

1. Unlock hooks to separate the tables.
2. Unlock legs by stepping down lightly on hinges. Legs will swing downward toward table. Legs lock in down position.
3. Pull hinge outward on modesty panel and fold panel downward.
4. Fold modesty panel over and lock into down position.

**CHROMCRAFT  CONTRACT**

*A Chromcraft Revington Company*

P.O. Box 126 • Senatobia, MS 38668 - USA  
1-866-777-1951 • Fax 1-800-336-1651  
[www.chromcraftcontract.com](http://www.chromcraftcontract.com)

All colors are printed reproductions only. Please request actual sample for absolute color fidelity.

**Refer to price list for complete product number, finishes and availability.**

W0808